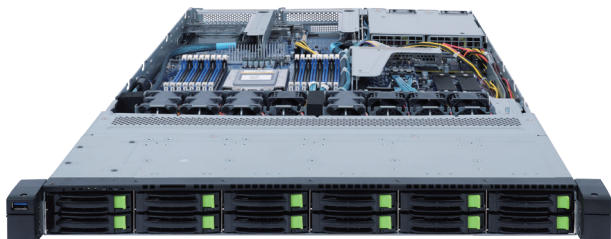
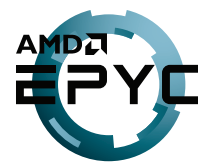


R162-ZA2

Rack Server - 1U UP 12-Bay



Features

- Hardware-level root of trust support
- Supports GRAID SupremeRAID SR-1000 NVMe RAID card
- Single AMD EPYC™ 7003 Series processors
- 8-Channel RDIMM/LRDIMM DDR4, 16 x DIMMs
- 2 x 1GbE LAN ports (Intel® I350-AM2)
- 1 x dedicated management port
- 12 x 2.5" Gen4 U.2 hot-swappable SSD bays
- 3 x Ultra-Fast M.2 with PCIe Gen4 x4 interface
- 2 x PCIe Gen4 x16 expansion slots
- 1 x OCP 3.0 Gen4 x16 mezzanine slot
- 1 x OCP 2.0 Gen3 x8 mezzanine slot
- Dual 800W (240V) 80 PLUS Platinum redundant power supply

Specification

Dimensions	1U (W438 x H43.5 x D780 mm)	Backplane I/O	Backplane P/N: 9CBP10C0NR-00 Speed and bandwidth: PCIe Gen4 x4
Motherboard	MZA2-CE0 Rev. 3.0	Power Supply	Dual 800W 80 PLUS Platinum redundant power supply AC Input: 100-240V
CPU	AMD EPYC™ 7003 Series processors Single processor, 7nm technology, cTDP up to 240W Up to 64-core, 128 threads per processor Compatible with AMD EPYC™ 7002 Series processors	System Management	Aspeed® AST2500 management controller GIGABYTE Management Console (AMI MegaRAC SP-X)
Chipset	System on Chip	OS Compatibility	Windows Server 2016 / 2019 RHEL 8.3 (x64) or later SLES 12 SP5 (x64) / 15 SP2 (x64) or later Ubuntu 18.04.5 LTS (x64) / 20.04 LTS (x64) or later VMware ESXi 6.7 Update3 P03 / 7.0 Update1 or later Citrix Hypervisor 8.2.0 or later
Memory	8-Channel DDR4 memory, 16 x DIMM slots RDIMM/LRDIMM modules up to 128GB supported 3DS RDIMM/LRDIMM modules up to 256GB supported Memory speed: Up to 3200 / 2933 MHz	System Fans	4 x 40x40x56mm (29,700rpm) 4 x 40x40x28mm (25,000rpm)
LAN	2 x 1GbE LAN ports (1 x Intel® I350-AM2) 1 x 10/100/1000 management LAN	Operating Properties	Operating temperature: 10°C to 35°C Operating humidity: 8-80% (non-condensing) Non-operating temperature: -40°C to 60°C Non-operating humidity: 20%-95% (non-condensing)
Video	Integrated in Aspeed® AST2500 2D Video Graphic Adapter with PCIe bus interface 1920x1200@60Hz 32bpp	Packaging Content	1 x R162-ZA2 1 x CPU heatsinks 1 x Rail kit
Storage	12 x 2.5" Gen4 U.2 hot-swappable SSD bays - Supports standard 2.5" form factor 15mm thickness devices	Reference Numbers	Barebone package: 6NR162ZA2MR-00 Rev. A00 Spare parts: - Motherboard: 9MZA2CE0NR-00 - Rail kit: 25HB2-3A0203-K0R - CPU heatsink: 25ST1-443107-A3R - Power supply: 25EP0-208004-L0S - GRAID SupremeRAID Core Software Module License (optional): a) 25FC1-SRBUN1-AFS (4-native NVMe RAID) b) 25FC1-SRBUN2-AFS (8-native NVMe RAID) c) 25FC1-SRBUN3-AFS (12-native NVMe RAID)
Expansion Slots	1 x PCIe x16 slot (Gen4 x16), FHHL 1 x PCIe x16 slot (Gen4 x8 or x16), FHHL, shared with OCP 2.0 1 x OCP 3.0 mezzanine slot (Gen4 x16) 1 x OCP 2.0 mezzanine slot (Gen3 x0 or x8) 1 x M.2 slot (PCIe Gen4 x4) 2 x M.2 slots (PCIe Gen4 x4)		
Front I/O	1 x USB 3.0		
Rear I/O	2 x USB 3.0, 1 x VGA, 2 x RJ45, 1 x MLAN		
TPM	1 x TPM header with SPI interface Optional TPM2.0 kit: CTM010		



Learn more about GIGABYTE server solutions, visit www.gigabyte.com/Enterprise

* All specifications are subject to change without notice. Please visit our website for the latest information.

* AMD, and the AMD Arrow logo, AMD EPYC and combinations thereof are trademarks of Advanced Micro Devices, Inc.

* All other brands, logos and names are property of their respective owners.

© 2022 GIGABYTE Technology Co., Ltd. All rights reserved.